



The Company. The Products. **SCHELL.**

SCHELL.

Made in Olpe. Respected worldwide.

Founded in 1932, SCHELL has remained a family-run business to the present day. This continuity is also reflected by a keen attention to values, as well as long-term strategy and decision-making.

As an independent company, we value and engage with our customers, suppliers and employees as equal partners. Over the last few years, our stable domestic growth has been matched by a substantial increase in export business. We see this as further evidence that 'Made in Germany' quality and constant improvement while maintaining a clear focus on our core competencies will continue to be our recipe for success in the future.



In the heart of Germany

Olpe is a town in the south-east of North Rhine-Westphalia. This is the place we at SCHELL call home.

- 1 Production building with offices and training centre
- 2 Production building and logistics centre

Our history.

From 1932 to the present day.

1932

Company founded by Hubert Schell in Olpe. Production of draw-off fittings.

1935

Manufacturing of WC flush valves.

1949

Start of production for angle valves with regulating function.

1957

Dipl. Ing. Günther Schell, son of the company founder, enters the company as managing partner and expands the company premises on Finkenstraße, Olpe to 10,000 m².

1974

Construction of a new production and logistics centre at Saßmicker Hammer, Olpe, on a site covering 40,000 m².

1998

Joachim Schell, son of Günther Schell, joins the company management team.

1999

Ongoing development of sanitary electronics in the field of electronically controlled washbasin fittings.

2002

Formation of a SCHELL subsidiary in Poland.

2004

Construction of a new building for production, administration, training, research and development on Raiffeisenstraße, Olpe, on a site covering 65,000 m².

2006

Andrea Schell, daughter of Günther Schell, joins the company management team.

2007

Launch of LINUS shower and wall-mounted draw-off taps, rounding off the range for public/semi-public sanitary facilities. SCHELL is awarded the highest international water rating.

2009

Opening of first branch office in India. SCHELL joins the Blue Responsibility initiative for sustainable sanitary solutions.

2011

Formation of a SCHELL subsidiary in Belgium. SCHELL becomes a member of EUnited Valves, the European fittings association. WELL – Water Efficiency Label.

2012

Formation of a SCHELL subsidiary in India.

2013

Formation of SCHELL subsidiaries in Hungary and France.

2015

Over 500,000,000 angle valves now installed worldwide. Formation of a SCHELL subsidiary in Singapore.

2016

Introduction of the SCHELL SWS Water Management System – the first intelligent water management system.

2017

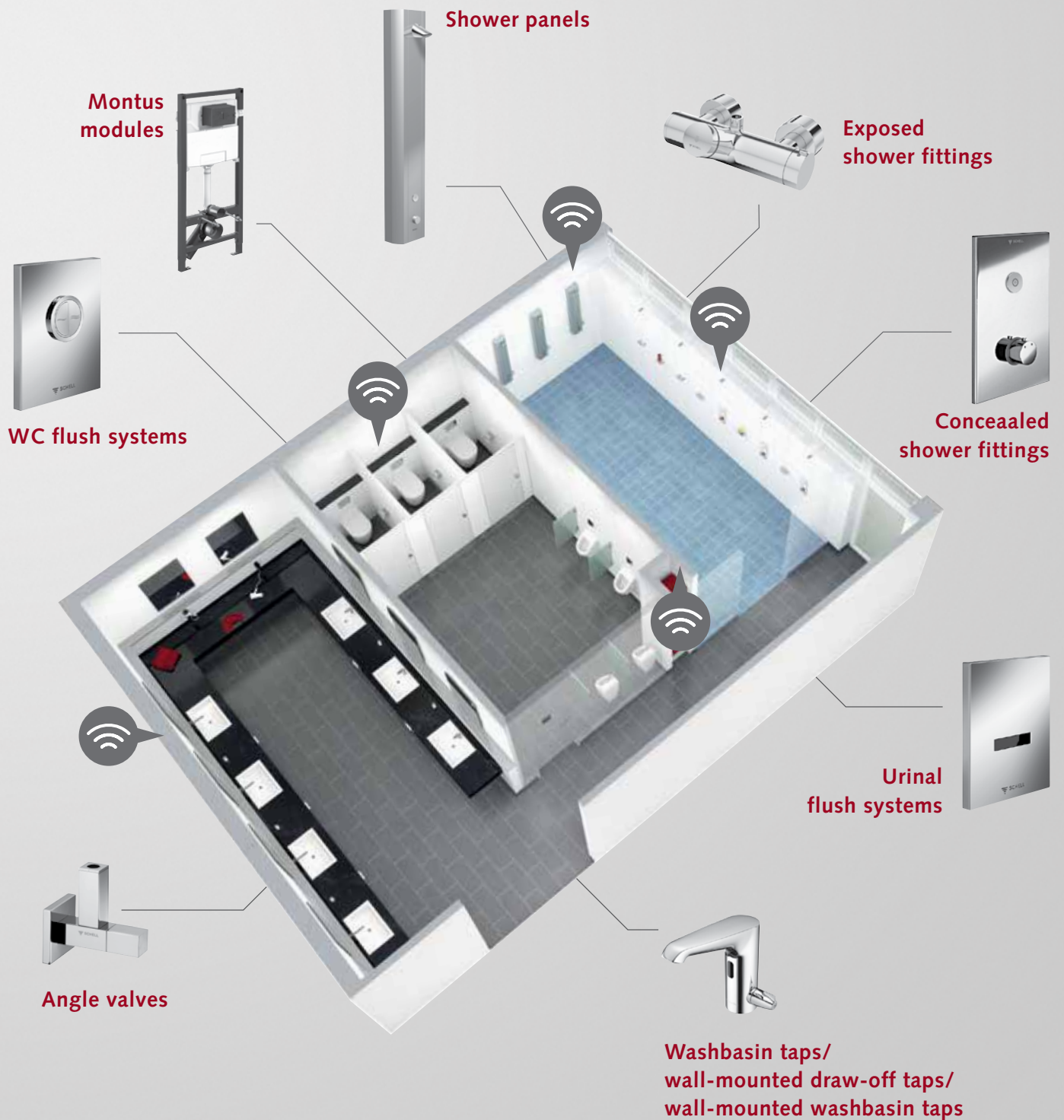
SCHELL recognised by 'Wirtschaftswoche' business magazine as one of Germany's most innovative medium-sized businesses.

2018

SCHELL is included in the list of world market leaders from southern Westphalia published by the region's Chamber of Industry and Commerce. The company's also receives the German Brand Award. SCHELL's product XERIS receives the German Design Award and the German Innovation Award.

SCHELL inside

SCHELL is the ideal solution wherever robust, hygienic and resource-efficient solutions are needed – such as in public, semi-public and commercial sanitary facilities.



Continuous improvement is in our DNA.

As a global market leader, our motivation is innovation.

Almost 90 years ago, SCHELL laid the foundation for a success story that continues to the present day. The first milestone was the production of angle valves, which began in 1949. To date, 500.000.000 have been installed worldwide. Today, we are also the leading full-range supplier of fittings for public, semi-public and commercial sanitary facilities.

Our company's success stems from a healthy interest in innovation that develops existing products in line with contemporary trends, integrates new technologies and channels our creativity. Our development and continuous enhancement of our fittings, angle valves and appliance connection fittings combines our passion for technology with our drive to create products that offer real added value in terms of hygiene and sustainability.



From an initial focus on angle valves, our portfolio has developed over the years into a comprehensive range of products for connecting fittings, household appliances and radiators – often intelligently combined with extra features and always of the first quality in terms of materials and finish. Every two seconds, our original product – the classical angle valve – is installed somewhere in the world.

Angle valves and appliance connection fittings



Our fittings for washbasins, showers, WCs and urinals combine an appealing design with high-quality workmanship and sophisticated control technology. Thanks to our wide range of models, the most demanding user and design requirements can be met in any washbasin, shower or WC facility. With our intelligent valve technology and uncompromising approach to quality, we set the standards when it comes to hygiene and the sustainable use of water.

Fittings for washbasins, showers, WCs and urinals



SCHELL is also a digital pioneer. Our SWS water management system ushers in a new era for the planning, fit-out and facility management of public buildings. The system is able to control and monitor all fittings from a central server. We call this 'smart public'. And now, parameters can be set easily even for individual fittings, with the SCHELL Single Control SSC Bluetooth® module.

SCHELL system solutions



SCHELL SWS

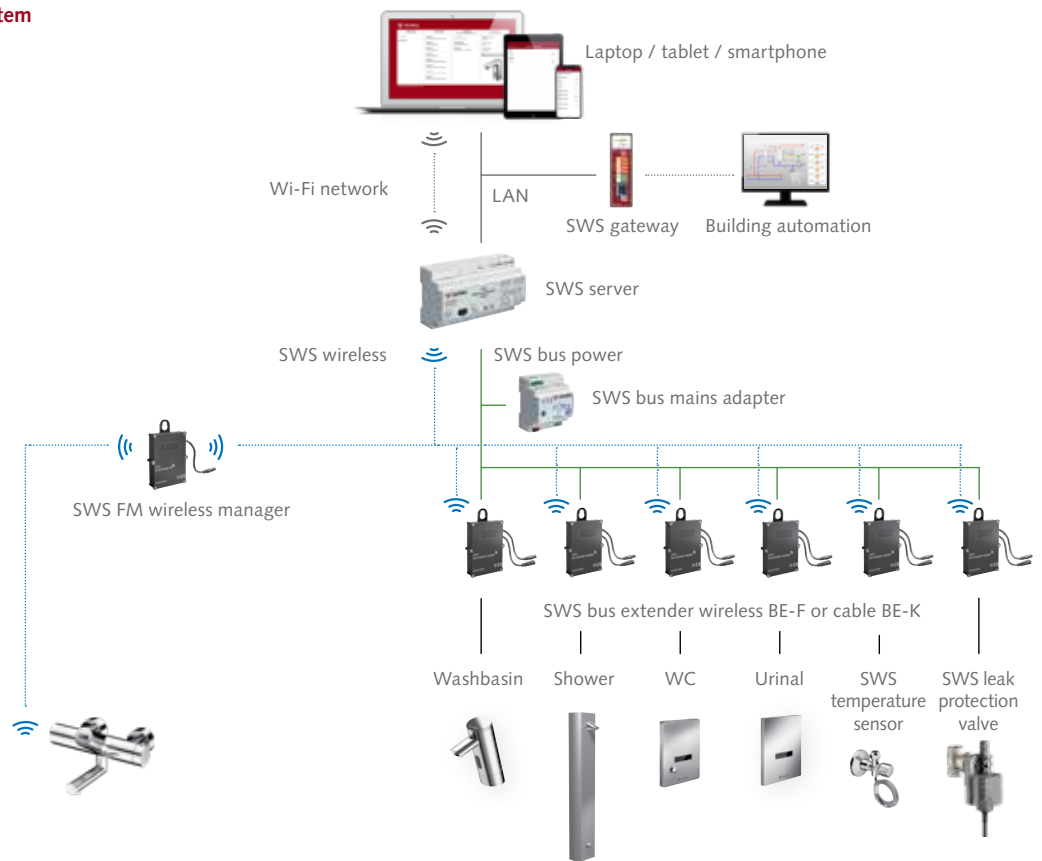
SCHELL SSC

SCHELL system solutions: the future is digital.

Even in public sanitary facilities.

The SCHELL system solutions usher in a new era for facility management in public buildings. From the parameterisation of individual electronic taps to the central, server-based control system for all installations, efficient user comfort is assured at all times with digital solutions from SCHELL.

SCHELL SWS Water Management System



SCHELL Single Control SSC Bluetooth® module



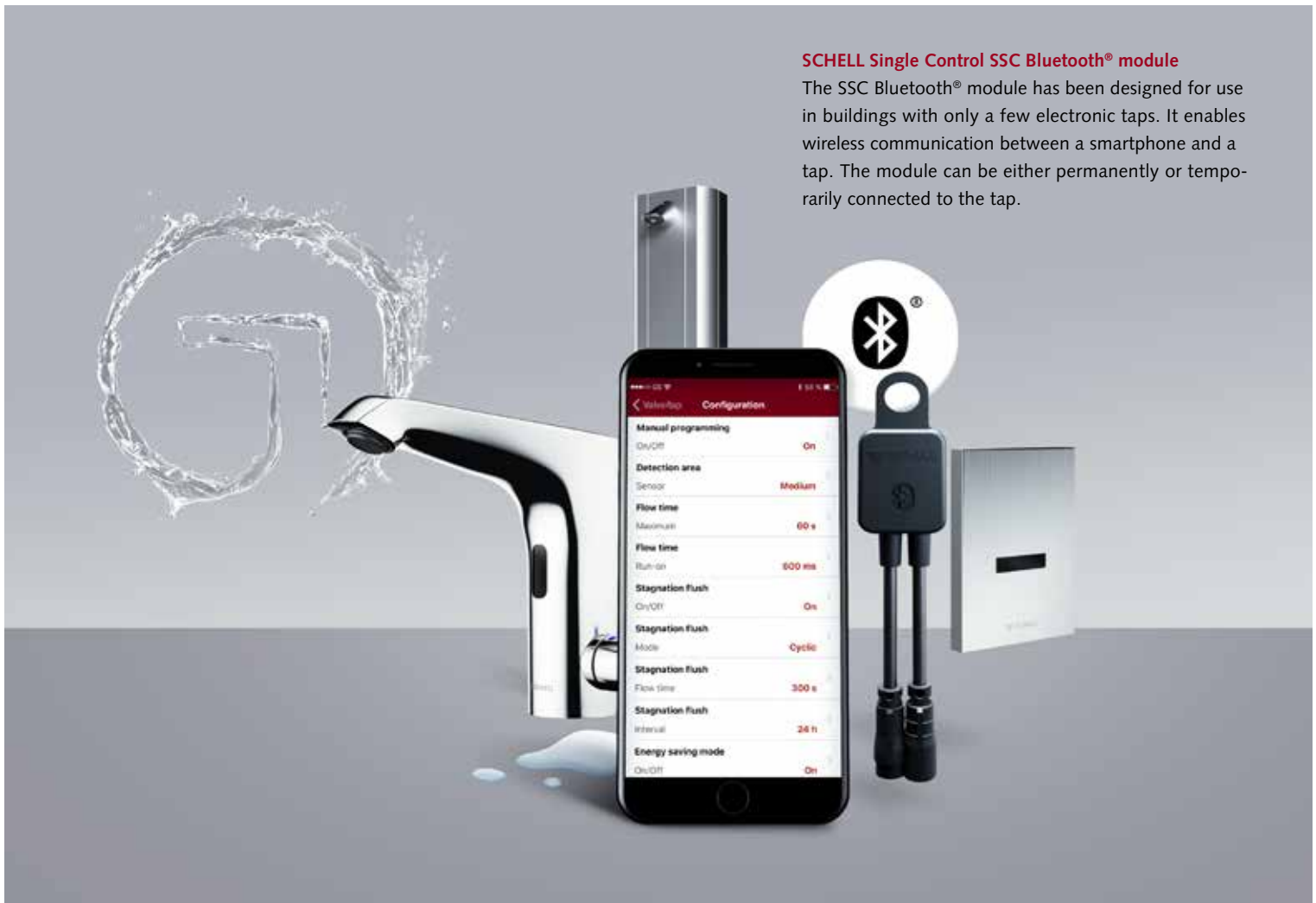
SHELL SWS Water Management System

The water management system is primarily designed for maintaining water quality in larger buildings with a large number of taps – and with sensors as required. In this system, all electronic taps and sensors are networked using a wired or wireless network and managed by one or more central servers.



SHELL Single Control SSC Bluetooth® module

The SSC Bluetooth® module has been designed for use in buildings with only a few electronic taps. It enables wireless communication between a smartphone and a tap. The module can be either permanently or temporarily connected to the tap.



Rey Juan Carlos hospital

Effective convalescence begins with a mature approach to hygiene – which is why the construction of the 'Rey Juan Carlos' hospital in Móstoles, Spain – a suburb of Madrid – used SCHELL products from the outset to ensure ideal conditions for hygienic management of the hospital building. From the concealed SCHELL WC flush fitting COMPACT II to the self-closing washbasin tap PURIS SC-M, all products are coordinated to create an environment that promotes good health. In the planning of this hospital with over 570 beds, functionality and aesthetics have been brought into perfect harmony – just as is the case with our fittings.



Responsibility for health.

The goal we set ourselves. The promise we make to you.

Clean drinking water is essential for life itself. In public sanitary facilities, maintaining hygiene can be a formidable challenge. The aim is to avoid the build-up of microbial colonies in pipework used only infrequently, so as to effectively avoid any risk of spreading pathogenic organisms.

Protecting our users' health is a challenging task that SCHELL, as a manufacturer of sanitary fittings, has been committed to for a great many years. Our innovative solutions for washbasins, showers, WCs and urinals are in demand worldwide, and have one goal above all others: ensuring optimum hygiene in the challenging environment of public, semi-public and commercial sanitary facilities.

This goal of creating first-class hygienic conditions is the guiding principle for our business. It includes:

- Selecting high-quality raw materials that do not contain any harmful additives
- Modern production processes and sophisticated quality control
- Developing a wide range of technologies that ensure safe operation
- Creating the technical preconditions for performing various hygienic flushing processes
- Designing high-quality products that are easy to keep clean

Only in this way can the necessary level of safety be assured for the fit-out, usage and operation of public sanitary facilities.

Hygiene: the facts

For hands to be hygienically clean, they must be soaped for a minimum of 20 seconds. If the tap is left running, this wastes at least 2 litres of water. **In this scenario, self-closing taps are effective at saving water.**

Public sanitary facilities can facilitate the transmission of bacteria and other microbes. In Germany, 60 % of motorway service stations were found to have problems with hygiene. **Our products make life more difficult for bugs and bacteria.**

According to the WHO, up to 80 % of all infection diseases are transmitted via the hands. **Contact-free taps keep hands away from potentially dirty surfaces, thereby minimising the risk of infection.**

Every year, up to 30,000 people become infected with Legionella bacteria in Germany. If those infected then develop the dangerous Legionnaires' disease and pneumonia, some 15 % of cases will result in the patient's death. **Thermal disinfection offers reliable protection.**

If water stagnates in pipework, a biofilm formed by pathogenic organisms can develop in a very short space of time. Regular stagnation flushes help to prevent this from happening. **Our electronic fittings handle this automatically.**

Washbasin taps.

More than just a tap: a wellspring of wellbeing.

The washbasin in public sanitary facilities is a focal point that is used by everyone. Our fittings have a positive impact on the perception of the washroom, on how people feel when leaving it and how much water is consumed.





Washbasin fittings

Our washbasin fittings fulfil the need for a modern look that offers up-to-date functionality. The integrated infrared sensor means they can be operated contact-free. Water flows only when it is truly needed.

- Optimum hygiene
- Water savings of up to 62%
- For cold and mixed water
- Programmable stagnation flushes and thermal disinfection
- SWS-capable



Electronic washbasin tap
XERIS E-Thermostat



Electronic washbasin tap
CELIS E HD-M



Self-closing washbasin tap
PURIS SC HD-M



Electronic washbasin tap
VENUS E HD-M

Exposed fittings

Our exposed fittings offer optimum hygiene with time-saving installation. Featuring self-closing operation, the taps save water by shutting off automatically according to the configured flow time.

- For cold and mixed water or with a thermostat
- Start/stop setting for economical water use
- Configurable flow time

Exposed washbasin tap
VITUS E



Self-closing exposed
washbasin tap
PETIT SC



Concealed exposed
draw-off tap
LINUS W-E-M

Shower fittings and shower panels.

Meeting all of your requirements – as easily as one, two or three.

Our shower fittings and panels, typically installed in communal shower facilities, offer optimum hygiene and durability plus economical use of water. These qualities, together with their design and controls, also make them attractive for other locations – such as hotels.





Concealed shower fittings

LINUS concealed shower fittings consist of an operating panel and SCHELL master box: Offering flexible combination options depending on the water supply and controls needed, all fittings offer superior water economy and hygiene. The perfect match: MONTUS module for showers.

Concealed shower fittings with cartridge technology

- For mixed water, premixed water and with thermostat
- Economical water consumption



Concealed shower fitting
LINUS D-C-T



Concealed shower fitting
LINUS D-SC-M

Exposed shower fittings

Exposed fitting VITUS

- For mixed water and with thermostat
- With single-lever mixer, self-closing cartridge and CVD touch electronics
- SWS-capable with CVD touch electronics
- Stagnation flushes possible
- Thermal disinfection can be activated for fittings with thermostat



Exposed shower panel
LINUS DP-C-T



Exposed shower fitting
VITUS VD-C-T
CVD button

WC fittings.

Always hygienic, always economical. For all applications.

Unlike private bathrooms, public, semi-public and commercial WC facilities are usually fitted out with flush valves and no cistern, to ensure that the WC can be operated quickly and easily. If supply line diameters are narrow, concealed cisterns are used. We offer the right solution for all applications.





WC cistern systems

Where WC facilities need to make an impact – such as in offices, hotels or restaurants – and where pipelines have narrow diameters, our MONTUS WC modules with concealed cisterns offer the perfect combination of functional technology and elegant control panels.

MONTUS operating panels

- Exclusive designs
- Three surface finishes: white, chrome, chrome matt
- Water-saving dual flush
- Compatible with size 80 and 120 cisterns



Operating panel MONTUS
CIRCUM



Operating panel MONTUS
TOWER



Operating panel MONTUS
BOARD



Operating panel MONTUS
KONKAV

WC cistern systems

Operating panels for special requirements

- Made from chrome-plated die-cast zinc (gloss/matt) or stainless steel
- Vandal-resistant
- Water-saving dual flush
- Can optionally be combined with contact-free infrared operation



Operating panel MONTUS
PLACE



Operating panel MONTUS
FIELD E

MONTUS WC modules

Drywall or masonry, barrier free, actuation from the top or vertical drain? Our MONTUS WC modules make sure you are ready for every eventuality. Our concealed cisterns are also available without frames.



Concealed WC flush valves

In high-traffic areas or where space is at a premium, we recommend the use of our concealed WC flush valves. They combine the flush-on-demand concealed COMPACT II fitting with an operating panel that is not only attractive but also hard-wearing and easy to clean.



WC operating panel
EDITION E MANUAL

MONTUS WC modules

Of course we also offer you the matching WC module MONTUS for the concealed WC fitting COMPACT II. As a result not only the installation of the fitting but also the installation of the WC is made convenient.



Exposed WC flush valves

Our exposed WC flush valves are used to quickly upgrade sanitary facilities in existing properties to the latest technical standards – optional features such as the water-saving dual flush can also be added.

Manual operation

- Flush-on-demand
- Self-closing with reliable cartridge technology
- Robust materials
- Simple installation
- Dual-flush option (with WC flush valve SCHELLOMAT SILENT ECO)
- Also for low-pressure use



WC flush valve
SCHELLOMAT SILENT ECO



WC flush valve
SCHELLOMAT

Urinal fittings.

Making a difference where it makes a difference.

From smaller-scale facilities in a restaurant to high-traffic areas in a sports stadium: urinals are always a practical, user-friendly and hygienic option – and especially with our fittings. The sensor-activated fittings mean that absolutely no contact is required at all. This makes urinals an attractive option for individual use – such as in hotels – and not least because of the timeless design of our operating panels.





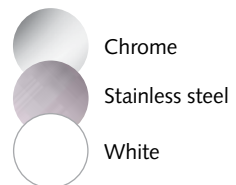
Concealed urinal flush valve

Based on the COMPACT II concealed fitting, you can choose between manual operation and a contact-free control system. Automatic operation via the odour trap sensor is an especially hygienic and user-friendly option. All fittings are complemented perfectly by our MONTUS urinal modules.

Urinal operating panel
EDITION E



Available in



MONTUS urinal module

We offer you matching solutions to ensure the efficient installation of our concealed urinal systems, urinal controls and exposed flush valves. Making your sanitary facility fit-out and renovation work much easier.



Exposed urinal flush valves

If installing concealed fittings would be too time-consuming – for a refurbishment project, for example – our exposed urinal flush valves are the perfect alternative. In this case you can also choose between a reliable control system featuring a self-closing cartridge or a system offering contact-free operation.

Contact-free operation

- Contact-free operation for optimum hygiene
- Robust materials
- Battery-operated



Infrared urinal flush valve
SCHELLTRONIC

Manual operation

- Perfect for simple refurbishment projects
- Durable cartridge technology
- Chrome-plated brass



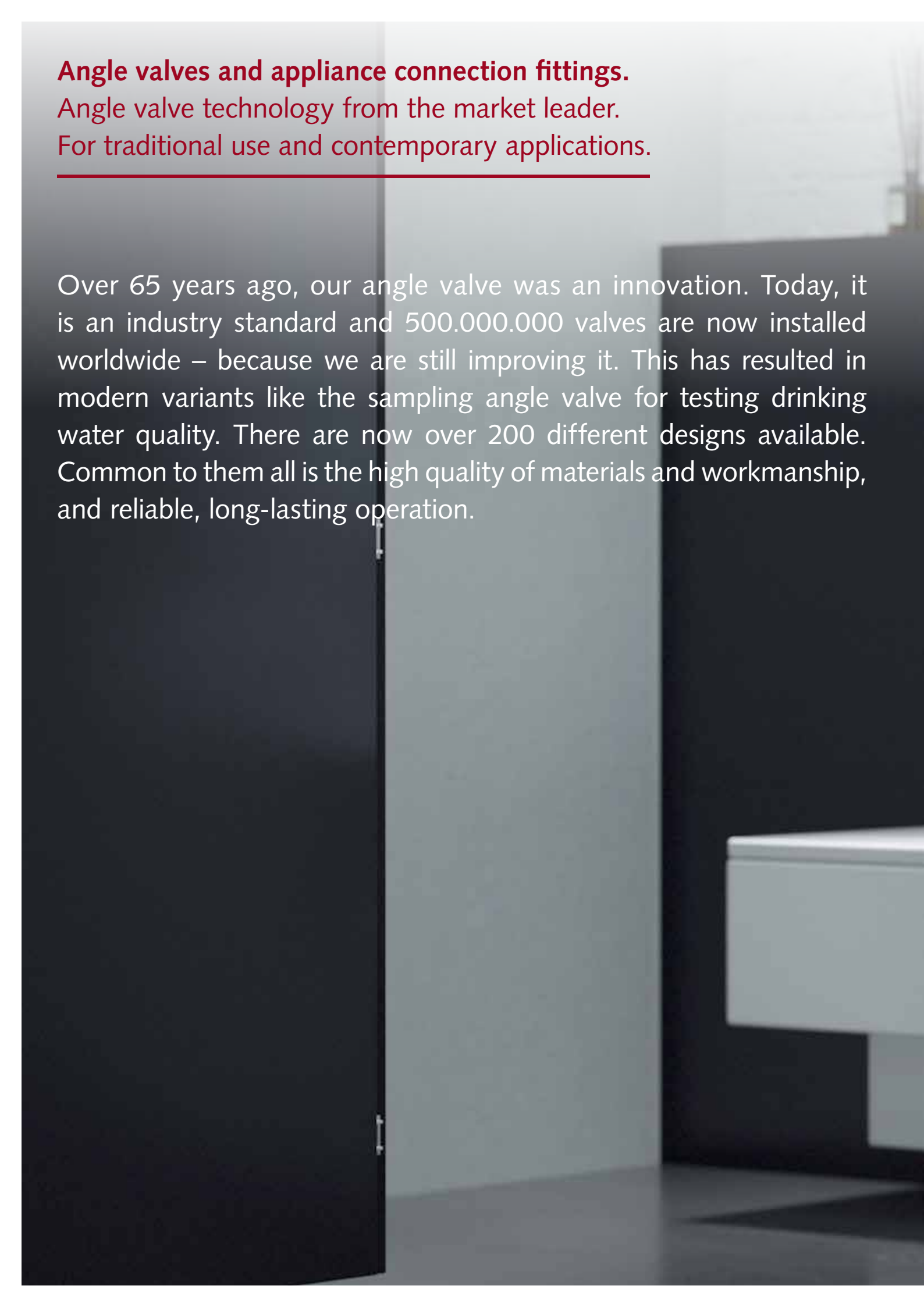
Urinal flush valve
SCHELLOMAT BASIC

Angle valves and appliance connection fittings.

Angle valve technology from the market leader.

For traditional use and contemporary applications.

Over 65 years ago, our angle valve was an innovation. Today, it is an industry standard and 500.000.000 valves are now installed worldwide – because we are still improving it. This has resulted in modern variants like the sampling angle valve for testing drinking water quality. There are now over 200 different designs available. Common to them all is the high quality of materials and workmanship, and reliable, long-lasting operation.





Angle valves

Choosing SCHELL means choosing:

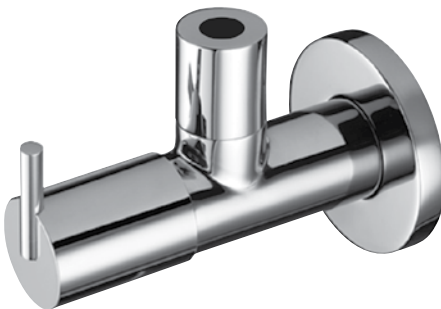
- Optimum drinking water hygiene
- Simple installation, operation and maintenance
- Sustainability and a long service life
- An appealing design
- A wide-ranging product portfolio



Angle valve with regulating function
COMFORT without filter



Angle valve with regulating function
COMFORT with filter



Angle valve with regulating function
PURIS



Design angle valve
QUAD

Appliance connection valves and fittings

Our appliance connection valves and fittings are the ideal choice for plumbing work where water needs to be drawn from the system – such as for household appliances or for watering the garden.

Inclined-seat appliance valve
COMFORT



Combination
angle valve
COMFORT



Frost-proof exposed
outdoor fitting
POLAR II



We were sustainable before people even started using the word.

Anyone who handles water on a daily basis knows how valuable this resource is. In public buildings – where our products are truly at home – there are particular challenges to be found. But with products from SCHELL, valuable benefits are achievable for the environment, users and building owners.

We make every effort to ensure that our products do not merely meet the very highest hygiene standards but also achieve the lowest possible levels of water consumption. Every day, intelligent technologies and a technically sophisticated product design help to save water while it is being used. Another benefit is that with showers and many hand wash-basins, reduced water consumption also means less use of hot water – and therefore less use of energy.

We believe sustainability is about more than just reducing water consumption, however: we also make an important contribution here by ensuring our products are very durable. And, once our products have reached the end of their life cycle, they can also be easily recycled.

Our fittings support a sustainable and environmentally-aware approach to facility management by reducing water and energy consumption, and by offering a long service life. This is also relevant for achieving building certification – according to the DGNB, BREEAM or LEED standards, for example. To provide optimal guidance for our customers, selected SCHELL fittings are classified according to WELL, the rating system published by EUnited Valves.

Environmentally-friendly production

Product usage is not the only area where we focus on sustainability. During manufacturing, for example, all of the brass chippings and swarf produced are collected and returned to the brass producer. In addition, all of our production work is handled by our two plants based in the Sauerland region of Germany. This not only cuts the costs of logistics but also avoids unnecessary environmental pollution. We also view resource conservation as essential when using raw materials.

SCHELL is a member of the following initiatives



Water saved during hand washing compared to using a conventional single-lever tap



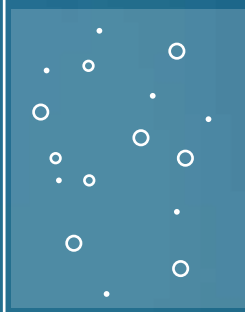
Single-lever fitting

approx.
0%
water saved



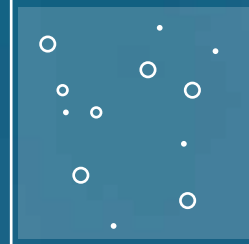
Self-closing fitting

approx.
55%
water saved



Tap with infrared sensor

approx.
62%
water saved





Leading design awards

At SCHELL, we also know that public facilities and design are not mutually exclusive. This is why we work together with selected design experts and have impressed many prize juries over the years with our skills in product design.



reddot design award
winner 2004



DESIGNPREIS
2006
NOMINIERT



product
design
award
2010 ■



Designpreis
Deutschland
2012
NOMINIERT



product
winner



Focus Open
2010

DESIGN **PLUS**



GERMAN
DESIGN
AWARD
WINNER
2018



GERMAN
INNO
VATION
AWARD '18
WINNER

Our products are always popular. And can be used anywhere in the world.

We believe that a good design makes a clear statement about the requirements that need to be met. In the case of our fittings, these requirements include optimum hygiene, rugged construction and a first-class fit-out for public, semi-public and commercial sanitary facilities. Our quality has not only secured a wide range of international product approvals but has also won several prestigious design awards.

International approvals

Whether in Germany, Belgium or the United Kingdom, our fittings comply with a wide range of stringent safety, hygiene and environmental standards, and have helped us to secure many established types of certification from leading international organisations.



Strong brand activities

Our orientation on values is reflected by our company and our brand. Not only do we support the 'Pro Original' campaign from the German VDMA association, for example, but we also received the 2018 German Brand Award for our consistent approach to brand management.



Our home is the public space.

Ensuring you feel at home, wherever you are.

All over the world, architects and design planners rely on our know-how and products for solving the challenging problem of drinking water hygiene in construction projects. Wherever and however water is consumed, our products offer peace of mind in terms of hygiene and safety.



Siemens Head Office,
Munich (Germany)



Eden Aréna,
Prague (Czech
Republic)

Burj Khalifa complex,
Dubai (UAE)





Production building with offices and training centre



Production building and logistics centre



Our products are always at your service. Just like our capable international sales teams.

Have a question? Just ask. It costs you nothing and in some cases could even avoid costly claims for damages. As a worldwide expert for modern valve technologies we are ready to offer you advice and assistance anywhere and at any time.

Our inside/outside and after sales teams provide you with answers to specific enquiries about planning, installation and using our products – both on your premises and on the construction site.

You're also welcome to pay us a visit. We offer a range of practical seminar courses in our modern training centre at our company headquarters. Theory is skilfully combined with engaging practice exercises to ensure you can work even more successfully than before.

We also regularly offer seminar series in a number of cities in Germany on selected issues of contemporary relevance. These offer an attractive package consisting of an interesting venue, seasoned experts and first-class solutions from SCHELL.

A global service

And we naturally offer training in many places other than Germany. Our application experts are also active abroad, offering guidance on commissioning our SWS water management system, for example, or the basics of planning a drinking water installation. In addition, seasoned SCHELL technicians are also on hand at all of our subsidiaries – such as in Belgium, for example – where they provide troubleshooting advice or organise seminar courses: for us, supporting the customer is always a top priority.

Are you looking for information about our company and our products?

You'll find everything you need with a visit to www.schell.eu. Our web presence here makes full use of the opportunities offered by digitalisation to offer you product literature, PDF files of our brochures and tender texts, an ever-expanding database of reference projects, and engaging installation and product videos. Our regular newsletter also keeps you up-to-date with all the news. Our brochures and product leaflets are naturally still available as traditional printed materials. You can meet us in person at industry trade fairs throughout Germany. Or call to arrange an appointment.

**You can reach us on +49 2761 892-0
or at info@schell.eu.**

We look forward to hearing from you.

SCHELL GmbH & Co. KG
Armaturentechnologie
Raiffeisenstraße 31
57462 Olpe
Germany
Tel. +49 2761 892-0
Fax +49 2761 892-199
info@schell.eu
www.schell.eu

